

Guarantee the best light for any design

Tunable-White lighting featuring TandemLED[™] technology is an adaptable lighting option that lets you select the Kelvin temperature AFTER the cabinets and lighting are installed. Set the Kelvin temperature to match the color scheme of any room or mirror natural lighting to synchronize with the body's circadian rhythm throughout the day. Tunable-White lighting has never been easier than with our patented TandemLED[™] technology that installs with the standard two wires.



Warm White 2700K



Soft White 3000K



Cool White 4000K



Daylight White 5000K

Single-White Lighting Options

While Tunable-White Lighting is the best option to make matching existing lighting and creating a personalized lighting experience easy, we do offer single-white lighting in four standard options.



Warm White 2700K

Warm White 2700K

This temperature complements brown woods or warm colors. Copper, gold, brass, and bronze hardware pair nicely with this temperature.



Soft White 3000K

Soft White 3000K

Select this temperature to complement natural wood, warm grey, and ivory. Bronze, satin nickel, and gold hardware pair nicely with this temperature.



Cool White 4000K

Cool White 4000K

This temperature goes well with white, green, and blue colors. Satin nickel, gunmetal, and pewter hardware pair nicely with this temperature.



Daylight White 5000K

Daylight White 5000K

This temperature goes well with stark white or bluish rooms. Satin nickel, chrome, and black hardware pair nicely with this temperature.



Embrace a full spectrum of white color temperature with tunable-white lighting

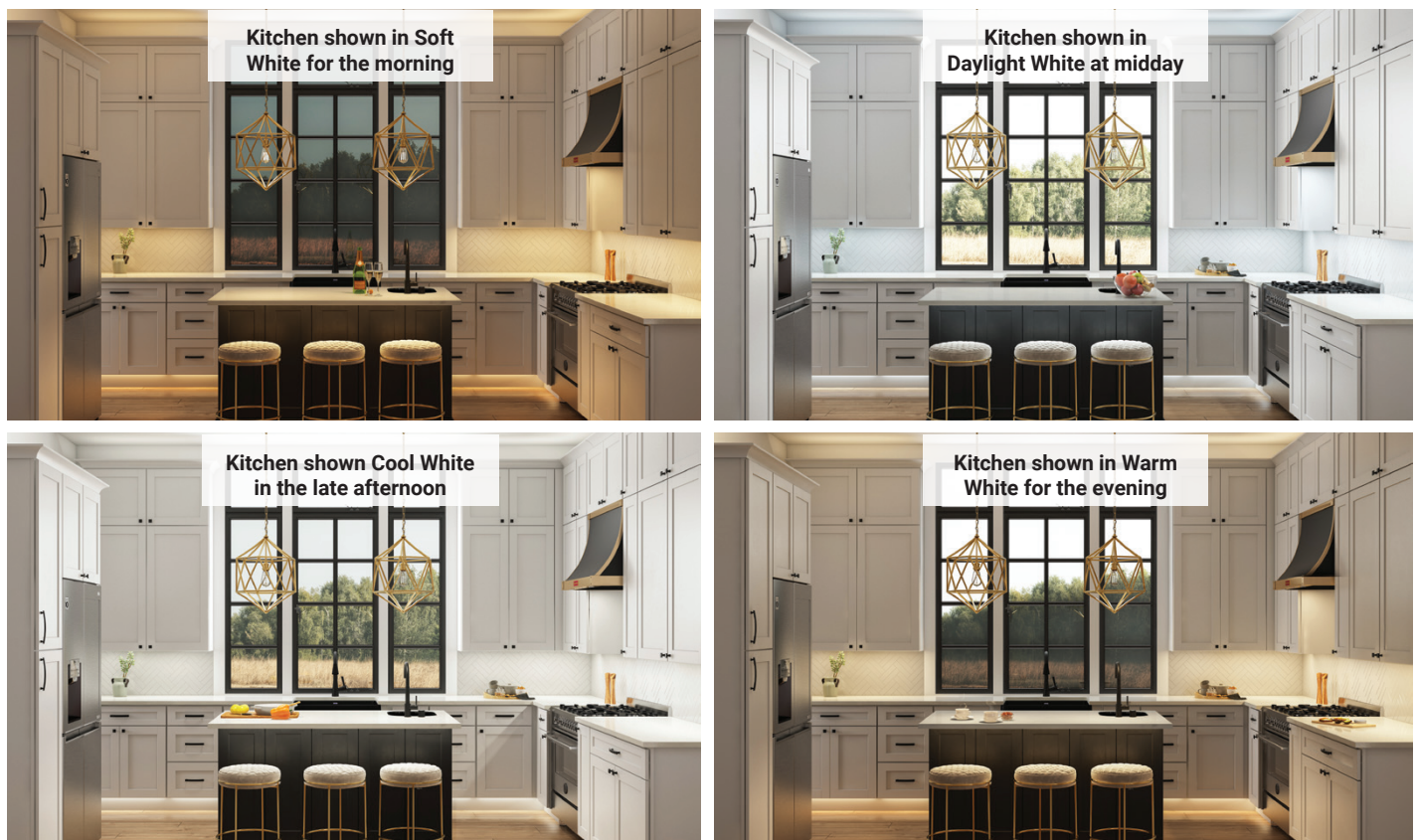


Tunable-white lighting offers an unrestricted lighting control experience. Any combination of white color and brightness is achievable: warm lighting, cool lighting, and any shade of white in between, from 5% to 100% brightness at all temperatures. Don't forget that tunable-white lighting with TandemLED™ technology only requires two wires, like the rest of our white light LED products.



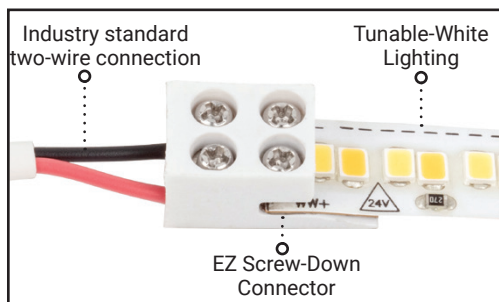
Smart lighting to match a daily routine

Integrate smart home control into any of our LED lighting products with a simple WAV Smart Receiver to turn LED lights into smart home ready lighting.



Lighting: Tunable-White

Patented two-wire, tunable-white LED lighting featuring TandemLED™ technology



Our tunable-white LED lighting features patented TandemLED™ technology that uses industry standard two-wires for installation. Easily tune the white light temperature from Warm White 2700K to Daylight White 5000K and all shades of white in between at any brightness level.



Scan to view the Tunable-White
Lighting Vimeo Channel
<https://delivr.com/2z4hx>

Give designers the power of choice.

Tunable-White Lighting featuring TandemLED™ technology is an adaptable lighting solution that allows the Kelvin temperature to be set AFTER the cabinets and lighting are installed. Help your designer and contractor customers match LED lighting to the color scheme of any room or let the homeowner adjust to fit their mood.

Tunable-White Tape Lighting



Warm White 2700K



Daylight White 5000K

Versatile for multiple applications

Tunable-White Lighting suits any space thanks to its ability to change from a warm to cool shade of white and back at any time—why settle for one choice?



600 Lm/Ft. Tunable-White Tape Light
LT600W24V



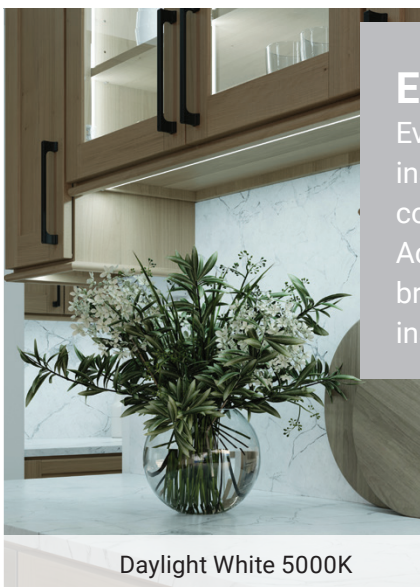
What is TandemLED™ Technology?



Tunable-White Linear Fixtures



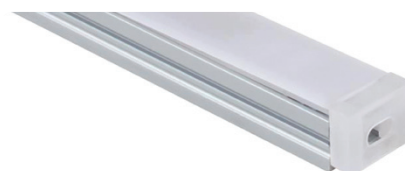
Warm White 2700K



Daylight White 5000K

Easy-to-install fixtures

Every fixture comes fully assembled—install the mounting clips, attach connection wire, and snap into place. Adjust the Kelvin temperature and brightness level at any time AFTER installation.

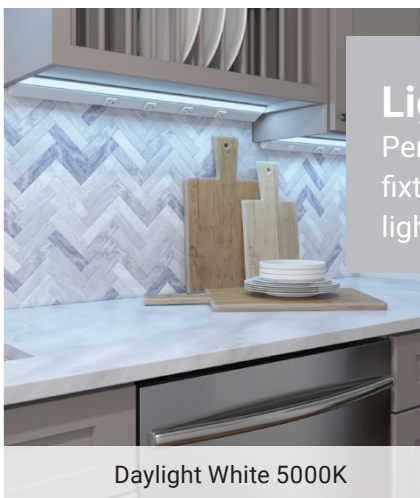


600 Lm/Ft. Tunable-White Dual-Mount Linear Fixture
LT6PD24V

Tunable-White Lighted Power Strip Fixtures



Warm White 2700K



Daylight White 5000K

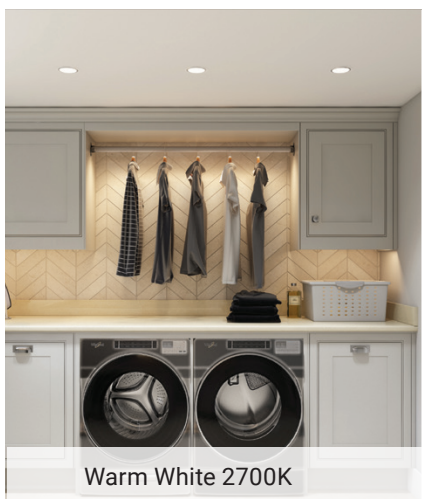
Light and power in one fixture

Perfect for adding light and power with one fixture; select the white light color after the lighting is installed.

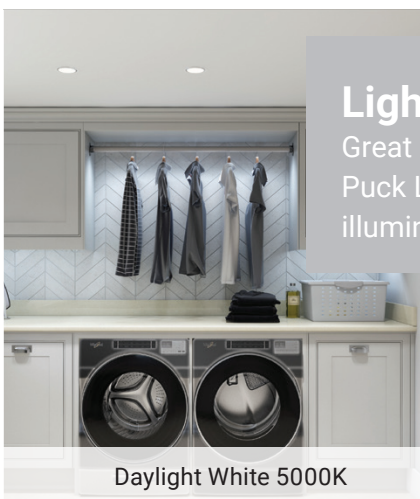


600 Lm/Ft. Tunable-White Tape Light
LP18-T6R9WGSN

Tunable-White Specialty Lighting



Warm White 2700K



Daylight White 5000K

Lighting for different occasions

Great for closets—a Lighted Closet Rod or Puck Lights help select the right outfit by illuminating clothing in any Kelvin temperature.



400 Lm/Ft. Tunable-White Lighted Closet Rod
LCR18-T4-04WSN